



TeethFast
— DENTAL LABS —

Crafting SMILES with PRECISION

Trusted Lab for all your Dental Needs



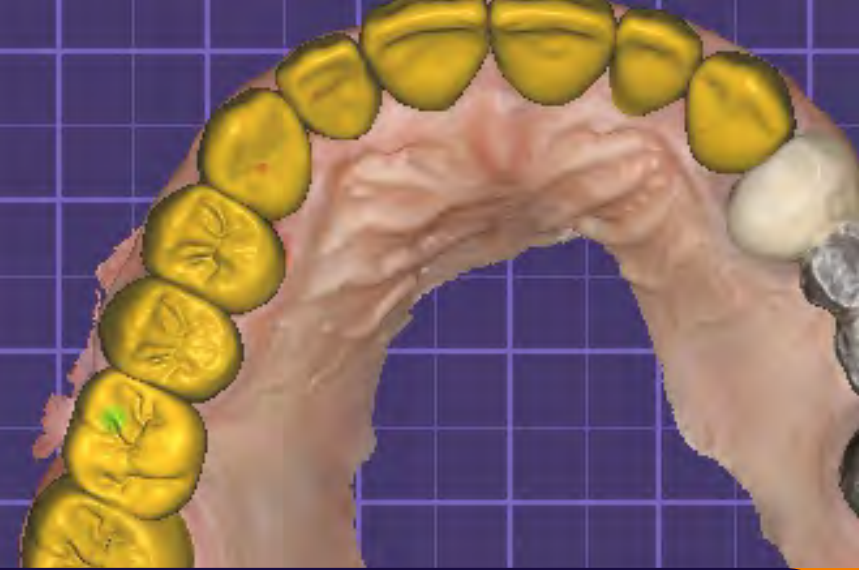


TeethFast **BASIC** Dental Products

We Strive to Serve you Better...



CAD CAM PFM Crowns



1 Higher Precision
With our advanced CAD/CAM technology, we achieve higher precision in crafting PFM restorations, ensuring a perfect fit.

3 Superior Durability
Our CAD/CAM-fabricated PFM restorations offer superior durability, providing you with long-lasting dental solutions that withstand the test of time.

2 High-Quality Materials
TeethFast uses top-quality materials for CAD CAM crowns, ensuring durability and longevity of the restoration.

4 Stain Resistance
CAD CAM crowns are highly resistant to staining, ensuring your smile remains vibrant and bright for an extended period.

Indications

- ★ Single or multiple Posterior Teeth
- ★ Implant Prostheses
- ★ Minimal Occlusal clearance of 2 mm

Contraindications

- ★ Long span bridges
- ★ Aesthetic cases
- ★ Bruxer patients

TF Premium Zr (Zirconia) Crowns

Experience Premium Dental Restorations with TF Zirconia Crowns



1 High Strength & Reliability

Our Monolithic Zirconia Crowns are engineered to be exceptionally strong and reliable, ensuring long-lasting dental restorations.

3 Highly Resistant to Stains & Discoloration

Our Monolithic Zirconia Crowns are highly resistant to stains and discoloration, maintaining the aesthetics of the restoration over a longer duration of time.

2 Fracture-Resistant Design

With its robust construction, our crowns are highly fracture-resistant, offering added durability.

4 Precise Fit with Digital Scanning & CAD/CAM Technology

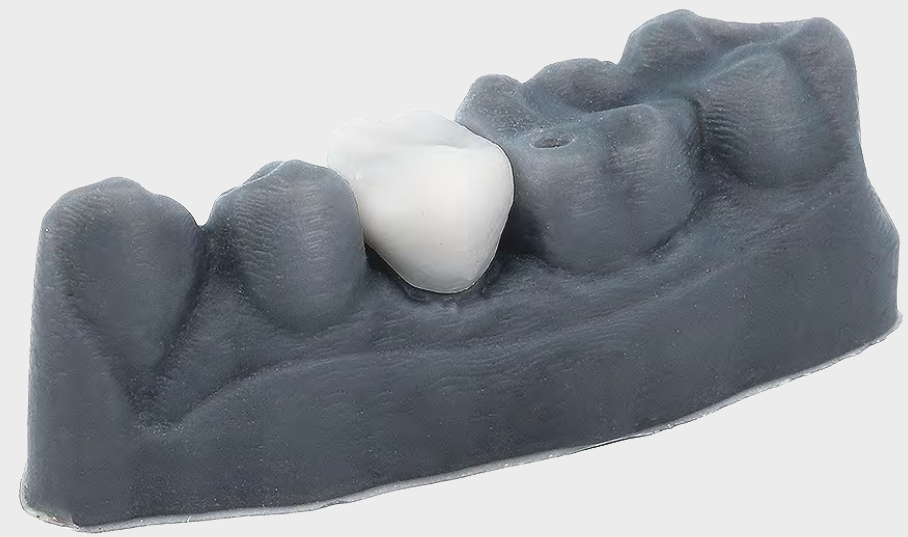
Utilizing state-of-the-art digital scanning and CAD/CAM technology, we ensure a precise fit for each crown, resulting in superior outcomes for patients.

Indications

- ★ Single Crowns
- ★ Upto 3 unit posterior Bridges
- ★ Implant prostheses
- ★ Highly discolored tooth stumps



Temporary Crowns (Milled and 3D Printed)



- Tooth Protection**
Temporary crowns protect the prepared tooth structure and the underlying pulp from sensitivity and potential damage.
- Functionality**
Temporary crowns restore the function of the tooth, allowing patients to chew and eat comfortably while waiting for the permanent crown.
- Adjustment of Bite**
Temporary crowns allow for adjustments to be made to the patient's bite in Full mouth rehabilitation cases, ensuring proper occlusion and comfort with the final restoration.
- Protection of Adjacent Teeth**
Temporary crowns also act as a barrier, preventing the adjacent teeth from shifting into the space left by the prepared tooth, thus maintaining proper tooth alignment.

- Esthetics**
Temporary crowns provide patients with a natural-looking tooth-colored restoration during the waiting period, preserving the appearance of their smile until the final crown is placed.
- Customization**
Temporary crowns are custom-made to closely match the size, shape, and color of the patient's natural teeth, providing a seamless fit in the mouth.
- Gum Tissue Shaping**
In cases where the gum tissue needs to be shaped or contoured for optimal esthetics, temporary crowns help in this process before the final crown is placed.

Indications

- ★ Single Implant Crowns
- ★ Implant-Supported Bridges
- ★ Full-Arch Implant-Supported Protheses
- ★ Immediate Implant Placement
- ★ Esthetic Zone Restorations
- ★ Limited Interocclusal Space

Removable Partial and Complete Denture

Elevate Your Confidence with TeethFast Dentures



1 Premium Quality
TeethFast uses the finest materials in the fabrication of our dentures, ensuring superior quality and durability.

3 No Odor or Taste
With our dentures, you can enjoy a natural feeling in your mouth without any unpleasant odors or taste.

5 Aesthetic Improvement
Our dentures not only restore functionality but also enhance the appearance of your smile and facial structure.

7 Suitable for Multiple Teeth
Whether you have several missing teeth or an entire arch to replace, our removable dentures are custom-made to accommodate various degrees of tooth loss, providing you with an effective solution for your specific needs.

2 Comfortable Fit
Our denture prosthesis is meticulously crafted for optimal comfort, providing a snug and secure fit in the mouth.

4 Restores Function
Dentures play a vital role in restoring your ability to chew and speak properly, enhancing overall oral function.

6 Easy Maintenance
Our dentures are designed for easy cleaning and maintenance. Regular brushing and occasional visits to the dentist for adjustments ensure a long-lasting and comfortable fit.

Indications

- ★ Missing teeth
- ★ Economical option
- ★ Non-surgical treatment
- ★ Temporary solution

Contraindication

- ★ Less bone density
- ★ Severe gum disease
- ★ High chewing forces
- ★ Aesthetic replacement of missing teeth

TeethFast Night Guard



Teeth Protection

- 1 TeethFast Night Guard prevents direct contact between the teeth and minimizes the damage caused by teeth grinding (Bruxism) or clenching during sleep.

Extremely Comfortable

- 3 The fit of our Night guard is crisp, and the material used for fabrication is of premium quality, making it very comfortable and easy to use.

Protects Dental Restorations

- 5 Night guards are beneficial for patients with dental restorations like crowns, veneers, or implants.

Reduces Jaw pain

- 2 Tooth Grinding can cause jaw pain, tension headaches, and discomfort in the temporomandibular joint (TMJ). Night guards help relax the jaw muscles and alleviate associated symptoms.

Customized Fit

- 4 Our Night guards are custom-made to fit each patient's unique tooth anatomy, ensuring optimal comfort and effectiveness using 3D Printed Models.

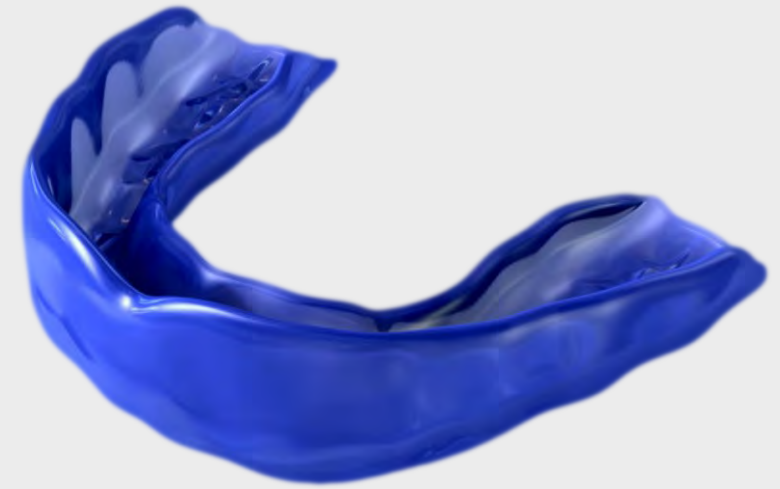
Hygienic and Durable

- 6 Properly cared for, night guards can last for a long time, maintaining their shape and effectiveness.

Indications of Night Guard

- ★ Parafunctional habits, e.g., Bruxism, clenching
- ★ Temporomandibular joint disorder
- ★ Full Mouth Implant or tooth Rehabilitation cases for managing excessive bite forces
- ★ Severe and Generalized attrition (Worn Off teeth)

TeethFast Sports Guard



- Tooth Protection**
1 Our Sports guards act as a cushion to absorb & distribute the impact of blows to the mouth to reduce chipping or knocking out of teeth during contact sports.
- Minimizes Jaw Injuries**
3 Our sports guards help in stabilizing the jaw and reduce the risk of jaw fractures or dislocations caused by impact.
- Enhanced Performance**
5 Feeling protected and confident can improve an athlete's performance and focus on the game or activity.
- Hygienic and Durable**
7 Properly cared for, sports guards can last for a long time, maintaining their shape and effectiveness.

- Prevents Soft Tissue Injuries**
2 TeethFast Sports guards are well-fitted to cover the teeth and gums, reducing lip, cheek, and tongue injuries during sports.
- Customized Fit**
4 Our Sports guards are Custom-made, offering a comfortable and secure fit.
- Customization**
6 Custom-made sports guards are tailored to fit each individual's mouth, providing superior protection and comfort compared to over-the-counter alternatives.

Indications of Sports Guard

- ★ Customized for various Contact sports



TeethFast
DENTAL LABS

TeethFast **PREMIUM** Products

Choose the Best With TeethFast Dental Lab

TeethFast Aligners

Your Path to a Confident Smile



Faster Treatment

1 Achieve your desired results in less time.

Enhanced Patient Acceptance

3 Enjoy the convenience and comfort of TeethFast aligners

FDA/CE Approved

5 Highest standard of quality and safety for your oral health.

Easy Maintenance

7 Remove aligners for eating, brushing, and flossing with ease, so there are no eating restrictions, unlike braces.

Fewer Appointments

2 With TeethFast Aligners, you'll need fewer visits to the dental clinic.

Durable and Effective

4 High flexibility and abrasion resistance ensure long-lasting and efficient treatment.

BPA-Free Material

6 Aligners crafted from safe and health-conscious materials.

Digital Treatment Planning

8 Digital planning to see the final results before starting the treatment.

Indications

- ★ Generalized Spacing between Teeth
- ★ Diastema (Spacing between front teeth)
- ★ Forwardly placed or proclined Teeth
- ★ Mild Crowding
- ★ Molars requiring Distal Tipping

Get ready to experience the benefits of **TeethFast Aligners** and unlock the potential of your smile.



FDA/CE Approved



BPA FREE



ISO Certified

TRADITIONAL BRACES vs TF ALIGNERS



Features	Traditional Braces	TeethFast Aligners
Visibility	Highly Noticeable	Invisible - One cannot spot them easily
Removability	Non-Removable	Removable - Freedom to remove aligners while eating, brushing & flossing
Oral Hygiene	Difficult to maintain routine healthy Oral Care, can result in gum problems	Since removable, it is easy to maintain routine healthy Oral Care
Comfort	Can cause ulceration in mouth	Fits smoothly on the teeth
Duration	Takes longer than aligners varies from case to case)	Takes relatively less time than traditional braces (varies from case to case)
Pain	Sometimes Painful	Painless
Food Restrictions	Yes, some Food Restrictions are there	No, there are absolutely no Food Restrictions
Treatment Results	The results cannot be visualized before starting the treatment	The results of aligners can be seen even before the treatment is initiated by Virtual Software.



DMLS PFM Crowns

Strong and Precise Dental Restorations

Durable and Sturdy

1 DMLS technology creates strong metal crowns for long-lasting dental restorations.

Comfort and Oral Health

3 Thin margins provide increased comfort and better oral health compared to CAD CAM & Other PFMs.

Enhanced Adhesion

5 Intricate microstructures in DMLS crowns ensure strong bonding with dental cement.

Time and Resource-Saving

7 High accuracy and reproducibility minimize adjustments, remakes, and save time during procedures.

Desired Fit

2 DMLS PFM Crowns & Bridges fit perfectly with your natural teeth.

Versatile and Reliable

4 DMLS enables the fabrication of long-span bridges up to 16 units.

Easy to Clean

6 The smooth and polished surface of DMLS Crowns reduces plaque buildup for easier cleaning.

Laser Sintering Technology

8 An advanced additive technology that uses lasers to fuse metal powders layer by layer, creating precise PFM crowns and metal copings.

Indications

- ★ Single or multiple Posterior Teeth
- ★ Long-span Bridges
- ★ Implant Prostheses
- ★ Implant hybrid framework

Contraindications

- ★ Patients with metal allergies
- ★ Requires more tooth reduction
- ★ Ceramic layering can chip off



TF Superior Zr (Zirconia) Crowns

**Experience Premium Dental Restorations
with TF Zirconia Crowns**



1 **Exceptional Strength & Reliability**

Our Monolithic Zirconia Crowns are engineered to be exceptionally strong and reliable, ensuring long-lasting dental restorations that patients can trust.

3 **IVOCLAR Blanks for superior quality**

Crafted using IVOCLAR Blanks, our crowns deliver superior quality with predictable results, ensuring natural-looking restorations.

5 **Precise Fit with Digital Scanning & CAD/CAM Technology**

Utilizing state-of-the-art digital scanning and CAD/CAM technology, we ensure a precise fit for each crown.

7 **Minimal chairside time**

Our CAD/CAM technology enables us to achieve precise designs and fabrications, reducing the need for extensive chairside adjustments to save patients time.

2 **Fracture-Resistant Design**

With its robust construction, our crowns are highly fracture-resistant, offering added durability.

4 **Unmatched aesthetics**

Crafted to emulate the natural translucency and color of real teeth, these crowns seamlessly blend into a patient's smile.

6 **Highly Resistant to Stains & Discoloration**

Our Monolithic Zirconia Crowns are highly resistant to stains and discoloration, maintaining the aesthetics of the restoration over a longer duration of time.



Indications

- ★ Single Crowns
- ★ Upto 3 unit posterior Bridges
- ★ Implant prostheses
- ★ Bruxer Patients
- ★ Highly discolored tooth stumps

Advantages

- ★ Minimal tooth reduction required



Zirconia Crowns with Layering

Unveiling the Remarkable Features of Layered Zirconia Crowns



Radiant Aesthetics

1 Our meticulous layering technique brings forth a lifelike translucency and depth, recreating the natural beauty of your teeth.

Precise Shade Matching

3 Achieving the perfect color match is an art we excel in. Our Zirconia Crowns blend seamlessly with your existing teeth, creating a harmonious smile.

Impeccable Margins

5 Our Zirconia Crowns boast precise marginal fit, ensuring comfort and longevity.

Personalized Characterization

2 Every detail matters. Our expert technicians ensure that each crown possesses its own unique character, complementing your individuality.

Enhanced Texture and Depth

4 The expert layering technique adds depth and texture to the crown's surface, mimicking the tactile qualities of real teeth for an authentic feel.

Gum-Friendly Contours

6 Our crowns are designed with precise consideration of gum contours, promoting healthy tissue adaptation and a harmonious gumline.

Indications

- ★ Anterior (front) teeth crowns
- ★ Smile Designing cases
- ★ Minor Gapping between teeth

Contraindications

- ★ High bite forces
- ★ Bruxer patients
- ★ Limited tooth structure
- ★ Severe Gum disease



How to choose the PERFECT Crown ???



Features	DMLS PFM Crown	CAD CAM PFM Crown	Zirconia Crown	Zirconia Crown with Layering
Anterior Crowns	Can be used if adequate interocclusal space is there	-	Recommended	Highly Recommended
Posterior Crowns	Recommended		Recommended	-
Ceramic Chipping	Can occur	Can occur	No	No
Bruxer patient	-	-	Recommended	-
Metal Free	No	No	Yes	Yes
Strength	High	High	Highest	High
Aesthetics	Medium	Low	High	Highest

IPS e.max Crowns and Laminates

Discover the Beauty and Strength of IPS E.MAX Crowns



IPS e.max®

1 **Unrivaled Natural Beauty and Vitality**

IPS e.max crowns by TeethFast boast a lifelike appearance, capturing the essence of natural teeth, and enhancing the aesthetics of your smile.

3 **Superior Fit and Marginal Adaptation**

Utilizing CAD/CAM technology, our crowns are precisely milled or pressed, guaranteeing an accurate fit and superior marginal adaptation, reducing the risk of bacterial leakage.

5 **Patient Satisfaction**

The combination of esthetics, strength, and comfort by IPS e.max crowns and laminates leads to high patient satisfaction, improving their confidence in their smile and overall oral health.

2 **High Strength and Durability**

Crafted with high-strength Lithium Disilicate, IPS e.max crowns offer exceptional durability, ensuring long-lasting and reliable restorations.

4 **Versatility in Restorations**

IPS E.Max crowns can be used for a wide range of restorations, including single crowns, bridges, inlays, onlays, and veneers.

6 **Conservative Preparation**

For certain cases, IPS e.max laminates may require little to no preparation of the tooth surface, making them a conservative and reversible treatment option.

Indications

- ★ Single crowns on anterior teeth
- ★ 3-unit anterior bridge
- ★ Inlays and Onlay
- ★ Tabletop preparation



Smile Test-drive

**Experience Your Future Smile
Introducing the Smile Test-Drive**



1 Smile Preview
With the Smile Test-Drive, visualize your prospective smile transformation virtually and physically before committing to any treatment, ensuring alignment with your aesthetic goals.

3 Realistic Simulation
The advanced technology of the Smile Test-Drive generates a highly realistic simulation, providing an accurate portrayal of how your new smile will appear.

5 Trial Before Commitment
The Smile Test-Drive allows you to "try on" your new smile temporarily, enabling you to gauge your comfort level and satisfaction before proceeding.

2 Personalized Consultation
Collaborate with your dentist to customize the virtual smile design according to your facial features, preferences, and unique characteristics.

4 Confident Decision-Making
Make informed decisions by visualizing the potential outcome, helping you feel confident and empowered about your smile transformation journey.

6 Adjustments and Refinements
Collaboratively refine the virtual design until it aligns perfectly with your preferences, ensuring a result that truly resonates with you.

Indications

- ★ Cosmetic smile treatment
- ★ Full-mouth tooth-supported rehabilitation

Implant Crowns

TeethFast Implant Crowns: Where Aesthetics, Precision, and Confidence Converge



Seamless Integration

- 1 Our implant crowns are meticulously designed to seamlessly integrate with your dental implant, ensuring stability and natural-looking results.

Longevity

- 3 Crafted with durability in mind, our implant crowns are built to withstand daily wear and tear, offering a lasting solution for your dental needs.

Gum-Friendly Contours

- 5 Our crowns are designed with precise consideration of gum contours, promoting healthy tissue adaptation and a harmonious gumline.

Customized Fit

- 2 Each implant crown is custom-made to match your unique bite and smile, providing optimal comfort and functionality.

Enhanced Aesthetics

- 4 The detailed design process allows for meticulous shaping and contouring, producing crowns that seamlessly blend with your natural teeth.

Indications

- ★ Single or Multiple Missing Teeth
- ★ Full Mouth Implant Rehabilitation Cases

Options available:

- ★ DMLS PFM Crown
- ★ CAD CAM PFM Crown
- ★ TF Superior Zr (Ivoclar) Crown

Custom Abutment



Precise Fit

- 1 Our Custom abutments are specifically designed and fabricated to match the unique contours of the patient's implant site and surrounding tissues using CAD CAM Technology, ensuring a precise fit and optimal esthetics.

Better Gum Management

- 3 TeethFast Custom abutments help in achieving proper soft tissue management, promoting healthy and harmonious gum contours around the implant crown.

Long-Term Stability

- 5 The precise fit of our custom abutments enhances the stability of the implant-supported restoration, reducing the risk of complications and the need for adjustments in the future.

Improved Aesthetics

- 2 TeethFast Custom abutments allow for better control over the emergence profile and crown contours, resulting in a natural and lifelike appearance.

Enhanced Function

- 4 The accurate fit of our custom abutments ensures proper alignment and distribution of forces, leading to improved chewing efficiency and overall functionality.

Indications

- ★ Single Implant Crowns
- ★ Implant-Supported Bridges
- ★ Restoration in Aesthetic zone
- ★ Severe angulation of Implant
- ★ Limited Occlusal Clearance



BioHPP Framework

- 1 Lightweight Comfort**
BioHPP framework is exceptionally lightweight, ensuring maximum comfort while wearing your dental prosthesis.
- 3 Biocompatible Harmony**
Crafted from biocompatible materials, BioHPP ensures compatibility with your oral tissues.
- 5 Stress Distribution**
BioHPP's flexibility and resilience distribute forces evenly, preventing undue stress on teeth and supporting structures.

- 2 Enhanced Durability**
Despite its lightweight nature, BioHPP offers remarkable durability, ensuring your dental restoration withstands the test of time.
- 4 Corrosion Resistance**
Unlike some metals, BioHPP does not corrode, ensuring both the longevity of your restoration and your oral health.

Indications

- ★ Dental Implant-Supported prosthetics
- ★ Metal allergies

Contraindications

- ★ Severe Bruxism
- ★ Limited inter-arch space



Titanium Framework



Biocompatible

- 1 Titanium is a biocompatible metal, meaning it's well-tolerated by the human body.

Lightweight

- 3 Despite its strength, titanium is relatively lightweight, which adds to the comfort of the prosthesis.

Custom Fit

- 5 The framework can be custom-designed to fit the unique contours of your mouth, ensuring a comfortable and precise fit.

Strong and durable

- 2 Titanium is known for its strength and durability, making it an excellent choice for supporting full mouth dental implant prosthesis.

Resistant to Wear and Tear

- 4 Titanium resists corrosion from bodily fluids, contributing to its longevity and stability.

Indications

- ★ Full Mouth Dental Implant



TeethFast
— DENTAL LABS —

 7880005832

 contact@teethfast.in



Dental Solution Perfected by TeethFast